

MORNING EQUITY REPORT

TECHNICAL OUTLOOK

- Benchmark index traded with positive bias before closing with 0.42% gain at 24854 level on Friday. Banking index outperformed the benchmark index as it closed with 1.57% gain at 52094 level.
- India VIX closed with 2.61% cut at 13.03 level.
- Among Sectors NIFTYMETAL outperformed the benchmark index as it closed with 1.57% gain while NIFTYIT underperformed as it closed with 1.47% cut.
- Broader market lagged the benchmark index as both MIDCAP index and SMALLCAP index closed with 0.31% and 0.06% gains respectively.
- Advance/Decline ratio was in favour of advances and cash turnover was higher than the 5-day average. FII were net sellers while DII were net buyers in the cash segment.
- Both European markets (DAX) and US markets (DJIA) closed higher on Friday. However, Asian Markets are trading mixed today.

Intraday Market Outlook

- Benchmark index is likely to trade with mild positive bias today. Index has support at 24750 - 24700 level and resistance at 25000 - 25050 level.
- Banking index is likely to perform in line with benchmark index today with support at 51800 - 51600 level and resistance at 52500 - 52700 level.
- SBIN has closed with bullish candlestick pattern. It is likely to trade with a positive bias today.

PIVOT TABLE

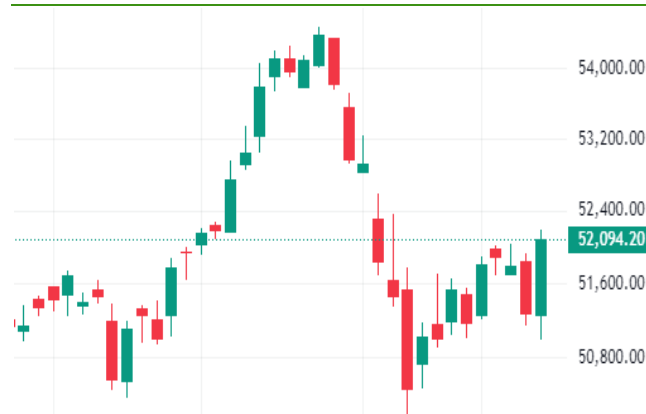
INDEX	S2	S1	CLOSE	R1	R2
NIFTY	24700	24750	24,854	25000	25050
BANK NIFTY	51600	51800	52,094	52500	52700

Source: MNCL RESEARCH

NIFTY (Daily) Chart



BANK NIFTY (Daily) Chart



Indices

INDEX	Close	% Change
CNX NIFTY	24,854	0.42%
BANK NIFTY	52,094	1.57%
FINNIFTY	23,938	1.50%
NIFTYNEXT50	74,288	0.38%
MIDCAP SELECT	13,034	0.32%
SENSEX	81,225	0.27%
VIX	13.04	-2.61%

Source: NSE

Sector Gainers/Losers

INDEX	Close	% Change
NIFTY AUTO	25,147	0.62%
NIFTY FMCG	61,042	-0.51%
NIFTY IT	42,107	-1.47%
NIFTY METAL	9,754	1.57%
NIFTYPHARM	23,356	0.44%
NIFTY REALTY	1,047	0.30%
NIFTY PSE	10,784	0.63%
NIFTYPVTBA	25,984	1.90%
NIFTYPSUBA	6,671	1.31%
NIFTYMIDCA	58,649	0.31%
NIFTYSMLC	19,078	0.06%

Source: NSE

FII / DII ACTIVITY

INDEX	Rs IN CR
FII	-5,485.7
DII	5,214.8

Source: NSE

Market Breath (Nifty 50)

Advance	33
Decline	17
Unchanged	0

Source: NSE

Turnover (Cr)

Daily cash Turnover	1,04,145
5 Days Average	1,00,455

Source: NSE

STOCKS OF THE DAY

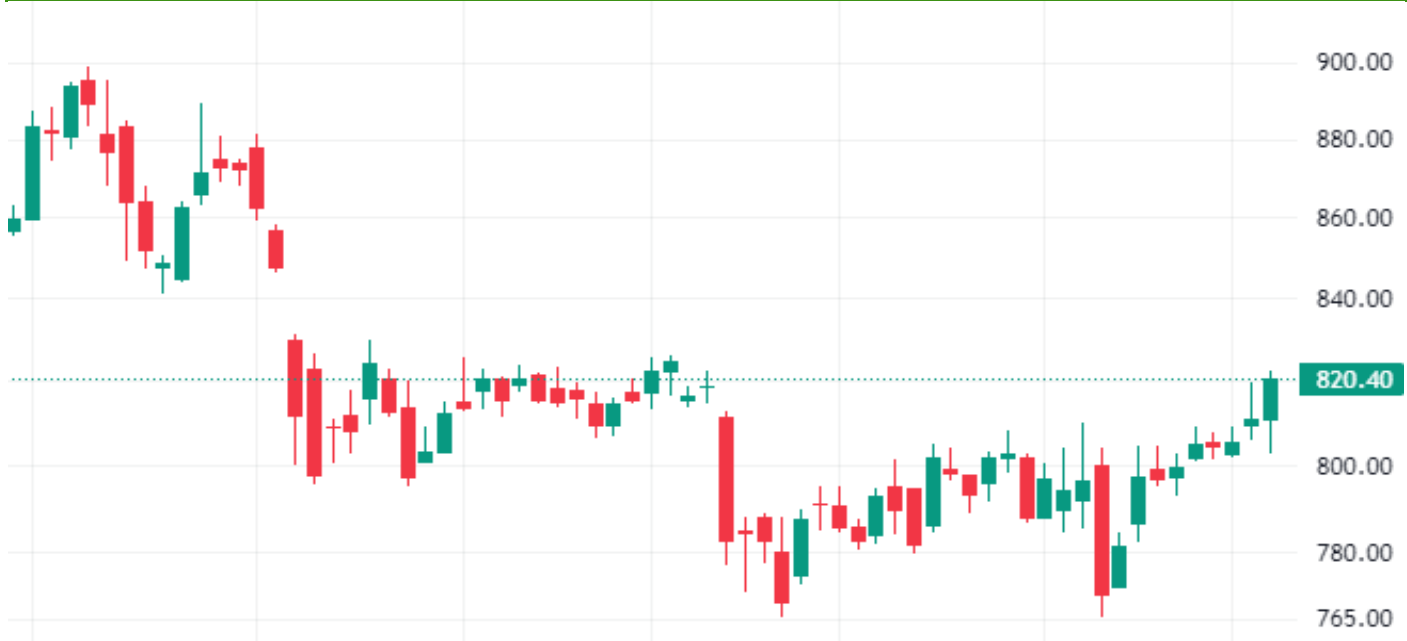
Stock	Closing Price	% Change	Bias	S2	S1	PIVOT	R1	R2
SBIN	820.4	1.2%	Positive	795.6	808.0	815.3	827.7	835.0

Source: NSE, MNCL Research

Note: Standard pivot and Support/Resistance are calculated based on a mathematical formula. If the stock trades above/below the pivot point (unless specified otherwise), then traders can initiate trade in that direction. We have highlighted our bias in the stock based on the Technical as well derivative data analysis.

CHART OF THE DAY

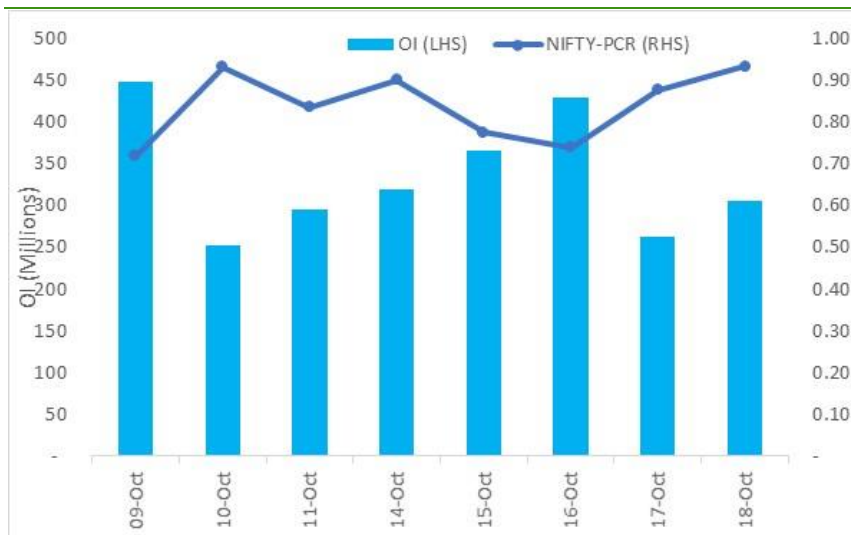
SBIN



DERIVATIVE SUMMARY

- For weekly (24 Oct), max OI addition was seen at 25400 call and 23000 put. Max OI is at 26000 call and 24000 put. For Monthly expiry (31 Oct), max OI addition was seen at 25600 call and 22250 put. Max OI is at 27000 call and 24500 put.
- Cumulative Nifty PCR stands at 0.93 (18 Oct24) Vs 0.88 (17 Oct24)
- Overall FII derivatives data is positive for Friday (18 Oct24)
- In Index futures, there was net unwinding on the short side resulting in long exposure going up at 33.57% (18 Oct24) Vs 32.97% (17 Oct24). In Index options, there was net addition in call options - long side and net addition in put options - short side.

Nifty PCR OI



Source: NSE, MNCL Research

Index Derivative data (31 Oct Expiry)

SYMBOL	Nifty	Banknifty
Closing Price	24854	52094
Max OI Call	27000	55000
Max OI Put	24500	55000
Max change in OI Call	25600	53000
Max change in OI Put	22250	49000
PCR (Cumulative)	0.93	1.20

Source: NSE, MNCL Research

EQUITY RESEARCH TEAM

Name	Designation	Email	Landline No.
Amit Jain	Senior Vice President (Head - Retail Research)	amit.jain1@mnclgroup.com	011-40851320
Arpan Shah	Senior Research Analyst	arpan.shah@mnclgroup.com	079-26666504
Ketan Kaushik	Derivative Analyst	ketan.kaushik@mnclgroup.com	0141-4007235

For Disclaimer & Risk factors please [click here](#)

Monarch Network Capital Ltd. (www.mnclgroup.com)

Office: - 9th Floor, Atlanta Centre, Sonawala Lane, Opp. UdyogBhavan, Goregaon (E), Mumbai 400 063. Tel No.: 022 30641600